

# ASSEMBLY INSTRUCTIONS

## SAXONY TABLE SET



### PLEASE READ THESE STEPS BEFORE PROCEEDING

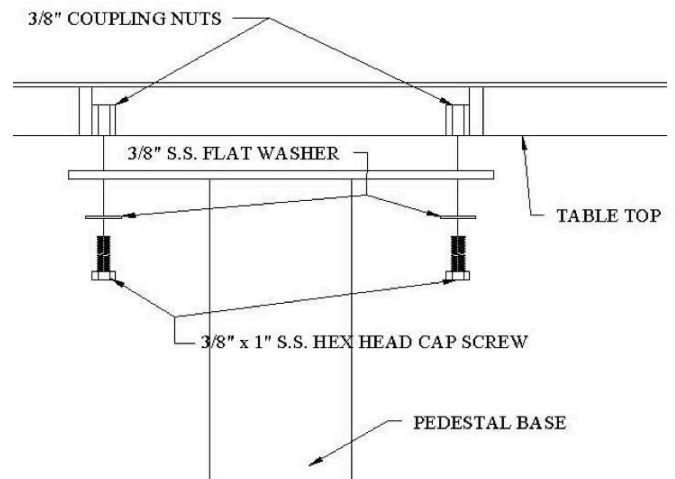
Included with your Saxony Table Set is the Following Hardware:

- Thirty-two (32) 1/2" Stainless Steel Flat Washers
- Sixteen (16) 1/2" Stainless Steel Hex Head Nuts
- Sixteen (16) 1/2" Stainless Steel Lock Washers
- Sixteen (16) 1/2" x 1 1/2" Stainless Steel Hex Head Cap Screws
- Four (4) 3/8" Stainless Steel Flat Washer
- Four (4) 3/8" x 1" Stainless Steel Hex Head Cap Screws

### ABIDE BY THE FOLLOWING INSTALLATION INSTRUCTIONS

#### Table

1. Place tabletop on pedestal, aligning the holes on the underside of the tabletop with the coupling nuts on the pedestal.
2. Add 3/8" washer to 3/8" x 1" cap screw and insert up through the hole in the pedestal into the nut. Then tighten.



#### Seat

1. Place seat on top of pedestal, matching up holes.
2. Add 1/2" flat washer to 1/2" x 1 1/2" cap screw and insert through holes in seat and pedestal.
3. Slide 1/2" flat washer over exposed threads and add 1/2" lock washer and nut and tighten.

