



2020 COLOR PALETTE

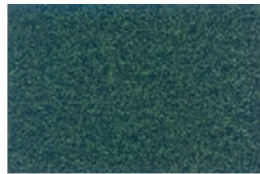
Safeguarded with our trademark KEYSHIELD® powder coating, Keystone Ridge Designs' superb products are further enhanced with a lustrous, durable finish that is unparalleled in product protection. KEYSHIELD® is our stamp of armored excellence that is foremost in site furniture finishes.

The KEYSHIELD® process involves cleaning the substrate, phosphatizing the product in the washing stage, and armoring the product in 7-15 mil thickness of color polyester powder coating. This finish protects each piece of furniture from chipping, cracking and UVA damage. The strength, durability and quality of the KEYSHIELD® finish is backed by a *three-year warranty*.

2020 STANDARD KEYSHIELD® COLOR OPTIONS



COPPER VEIN • PLRS 90242 *



VERDI GREEN • SRSS 90079 *



MATTE BLACK • 38/80020



GLOSS BLACK • 38/80010



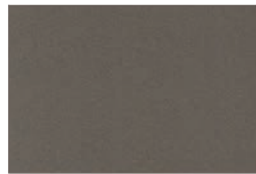
BRONZE • 39/60020



CHAMPAGNE • 349/68780



HUNTER GREEN • RAL 6009



CHROMITE • 38/90018



SAPPHIRE • RAL 5003



CHOCOLATE • RAL 8028



CHARCOAL • RAL 7022



EVERGREEN • 39/50060



SPARKLE SILVER • 49/90450



NANTUCKET BLUE • RAL 5005



BURGUNDY • RAL 3005

Colors may vary slightly due to printing processes. SAFETY YELLOW is available upon request for no added charge. An additional 160 custom colors and color matching are available for a surcharge. Colors and metal samples available upon request.

* Texture Finishes

PROPRIETARY STATEMENT

This document and all information shown hereon are the exclusive property of Keystone Ridge Designs, Inc.® This document is furnished with the express understanding that neither it nor the information on it is to be disclosed or

reproduced in whole or in part, or used in any way, either directly or indirectly, for the benefit of anyone other than Keystone Ridge Designs, Inc.® without its written consent.

